



GAT MONTHLY MEMBERSHIP PROGRESS REPORT

Results as of: 2/28/2023

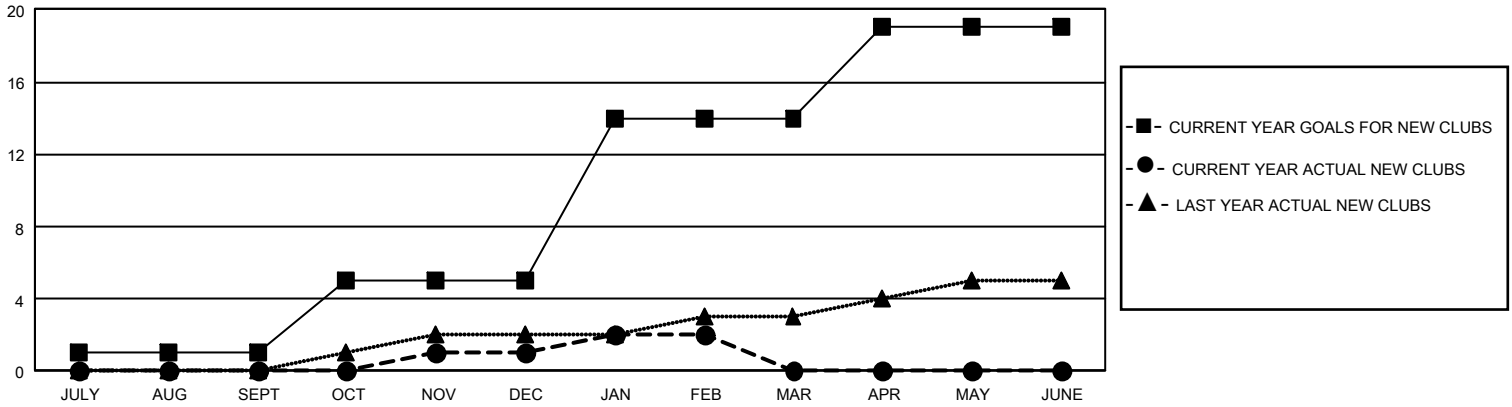
GMT Constitutional Area 3, Group G

REPORT DOES NOT INCLUDE CLUBS IN UNDISTRICTED AREAS.

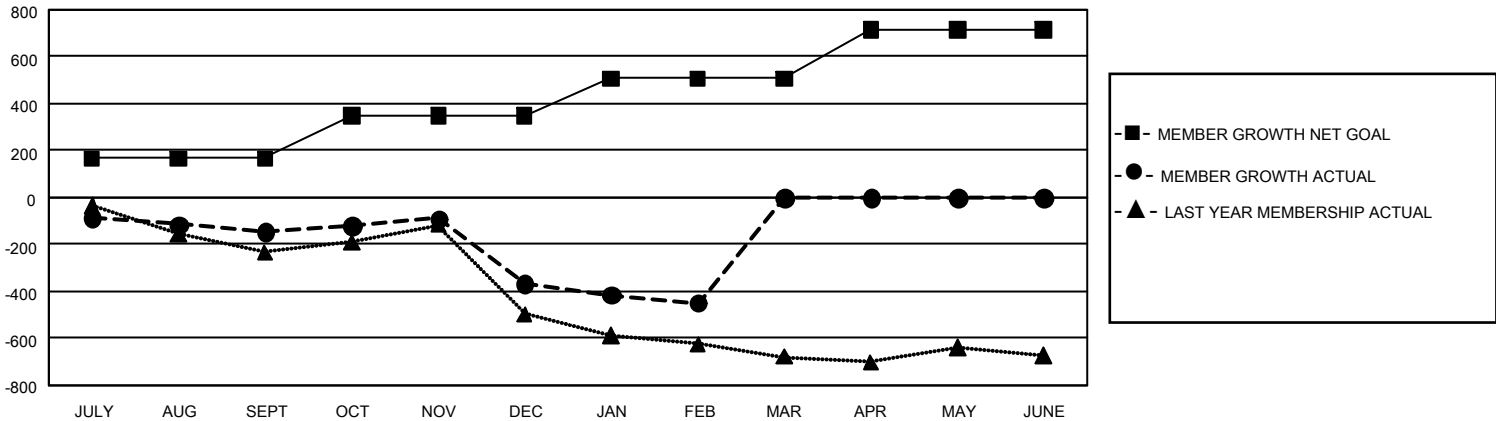
Clubs			
RESULTS FOR 2022-2023			
QUARTER	NEW CLUB GOAL	NEW CLUBS	DROPPED CLUBS
JULY/AUG/SEPT	3	0	6
OCT/NOV/DEC	12	1	13
JAN/FEB/MAR	27	1	3
APR/MAY/JUNE	15	0	0

Members			
RESULTS FOR 2022-2023			
QUARTER	MEMBER GROWTH NET GOAL	MEMBER GROWTH ACTUAL	DROPPED MEMBERS ACTUAL (including transfers)
JULY/AUG/SEPT	167	224	326
OCT/NOV/DEC	182	352	532
JAN/FEB/MAR	158	157	209
APR/MAY/JUNE	206	0	0

GOALS AND ACTUAL NEW CLUBS CUMULATIVE



GOALS AND ACTUAL MEMBERS CUMULATIVE



DROPPED CLUBS: 22	188 CLUBS OF 495 ADDED 1 OR MORE NEW MEMBERS	<u>GENDER DISTRIBUTION</u>	
		MALE	5,708 (53.59%)
<u>DROPPED MEMBERS</u>		FEMALE	4,942 (46.40%)
DECEASED	77	NON BINARY	0 (0.00%)
CLUB CANCELLED	144	PREFER NOT TO ANSWER	1 (0.01%)
OTHER	846	TOTAL FAMILY UNIT MEMBERS	4,627
TOTAL	1,067	FAMILY MEMBERS PAYING HALF DUES	2,436

[CLICK HERE FOR CUMULATIVE MEMBERSHIP DATA](#)